

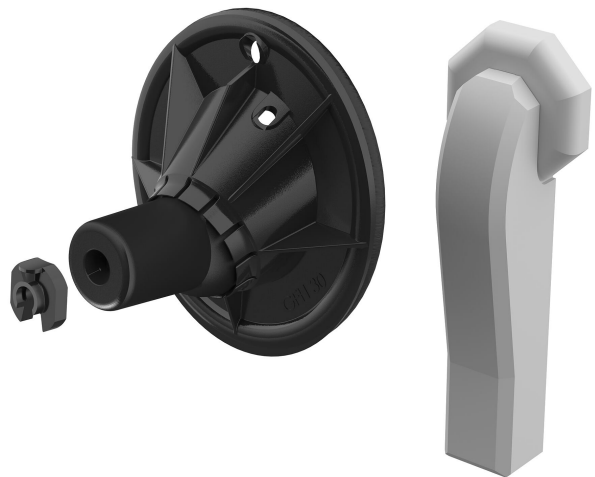
Fibre optic building entry

for buildings without a basement

GFH20 2x7-10 PRO

For reliable sealing of fibre optic cables.

- **Universal building entry with injection system for drill holes in the most common types of wall**
- **Enables horizontal or oblique installation up to a 45° angle**
- **Low-impact sealing of fibre optic cables by means of sealing lips**



FACTS

Material:

- Waterproof concrete stress class 2, Waterproof concrete stress class 1
- Flange: ABS
- Ball insert: EPDM
- Sealing tape: Butyl
- Mounting disc: PA
- Pipeklemme: ABS

Advantages:

- Quick to assemble in just a few minutes
- Small opening diameter Øi 20 mm

Scope of delivery:

- 1 piece GFH20
- 1 piece Hauff RESINATOR 2-component resin, 80 ml
- 1 piece mixing nozzle
- 1 piece wall terminator element
- Suitable number of pipe clamps, depending on variant

Dimensions:

- Area of application: 2 fibre-optic cables with Øa 7-10 mm or 1 fibre-optic cable with Øa 6 - 13 mm or 1 fibre-optic cable with Øa 12 - 16 mm
- for drill holes Øi : 20 mm
- for wall thicknesses starting from 100 mm

FEATURES

Number of cables/medium: 2
Suitable for medium pipe OD (mm): 7 - 10

PICTURES

