

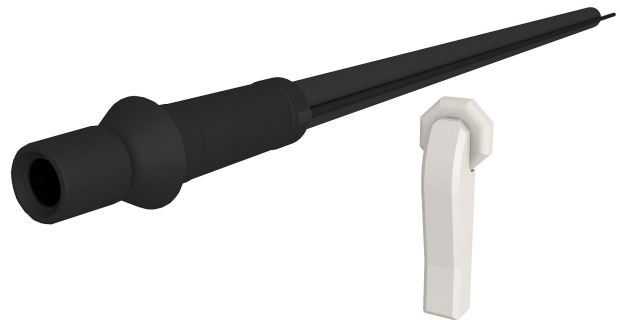
Membrane injection system

for buildings with a basement

MIS60ND 1x6-12 BL1300 Set10

For reliable sealing of micropipes/ fibre optic cables, telecommunications cables or power cables. Can be used for uncontrolled drilling rockets.

- **No groundwork at the property**
- **Universal building entry with membrane injection system for drill holes in the most common types of wall**
- **Controlled ejection of resin through slit membrane hose**



FACTS

Material:

- Waterproof concrete stress class 2, Waterproof concrete stress class 1
- Flange, seal insert and counter-bearing: EPDM
- Resin filler hose: PE
- Wall terminator element: Flame-retardant polycarbonate
- Pipe: PVC-U
- Wall collar: PE
- Fast arrangement fixture: glass fibre reinforced polyamide/ABS

Advantages:

- Sealing lips ensure gentle seal for media lines
- Variety of pre-mounted seal inserts for variable configuration

Scope of delivery:

- 1 packing unit:
- 10 pieces MIS 60ND
- 10 pieces wall terminator element (only for communication variant)
- 10 pieces wall collar (only with electricity variant)
- 10 pieces 2-component resin RESINATOR, 150 ml
- 1 piece quick tensioning device MIS60 SVS
- 1 piece core drill hole cleaning brush MIS REB

Dimensions:

- For core drills Ø: 62 - 65 mm
- For wall thicknesses: from 200 to 1200 mm

FEATURES

Number of cables/medium:	1
Suitable for medium pipe OD (mm):	6 - 12
Overall length (mm):	1300
wall thickness (mm):	200 - 1.200