

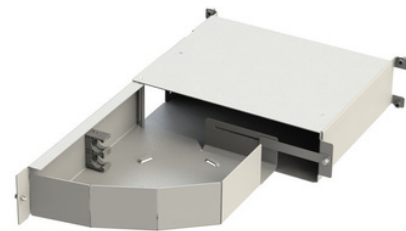
## 2LINE Storage boxes (Kopie)

### Storage boxes

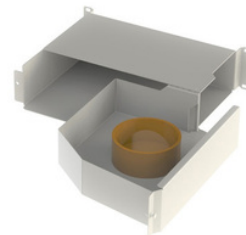
## 2LINE-Patchkabelablagebox-2HE-19-R

Article no.: 2LINE-Patchkabelablagebox-2HE-19-R

Unused fibre bundles that are not required for splicing can be stored in the 2LINE Loose tube storage box and unused patch cables can be stored in the 2LINE Patch cable storage box.



- For use in ODF and MFC
- Available as mirrored variant



Picture may differ from selected product

## Facts

### Advantages:

- Protected storage of loose tubes and patch cables

### Scope of delivery:

- 1 pc. 2LINE Loose tube storage box or 1 pc. 2LINE Patch cable storage box Mounting material

### Dimensions:

- HxWxD[mm]: 88x350x280

## Material:

- Sheet steel coated RAL 7035

## Features

Dimensions (mm) W x H x D Capacity  
max.: 88x445x280