

2LINE Multi-Function Cabinet MFC 18 – Whisper-PoP (Kopie)

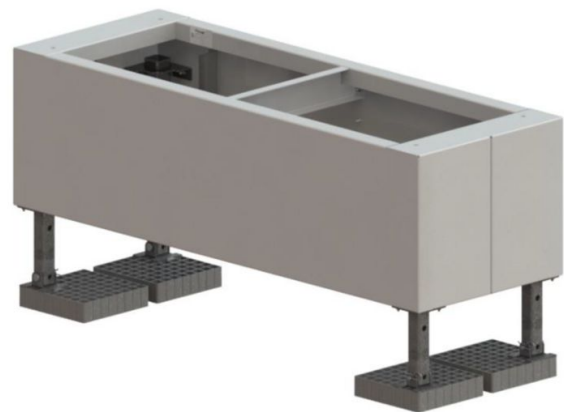
Outdoor distribution cabinet

2LINE-MFG24-SO

Article no.: 3030647450

The multi-function cabinet 2LINE MFC is an outdoor distribution cabinet for passive and active FTTx network technology. It is adapted and equipped according to your requirements in terms of size, interior fittings, air conditioning and safety.

- **Internal cooling temperature selectable between 25-45 °C**
- **Externally only 500mm deep and 1940mm high**
- **Whisper-PoP 35dB(A)TI sound pressure level (1m hemisphere) on Noise Protection such as residential areas**



Picture may differ from selected product

Facts

Advantages:

- Active air cooling system:
- 3500W cooling capacity
- Hermetically sealed air cooling circulation
- Maintenance-free (Except for inlet air filter exchange, if used)
- Power consumption ~1.3kWh (at max. heat load)
- Supports all common cabling systems, micro cables and blown fibre systems
- Equipped with fibre optic modules, 19-inch or ETSI equipment mounting frames, air conditioning, UPS, batteries and intelligent cable management as required
- Double walls on a stable frame with a sealed base plate protect the passive or active technology against mechanical loads, moisture, heat and cold
- Sealed cable entries in the base plate ensure the level of protection in the interior
- Doors with single or double locking system
- Roof structure for ventilation and air conditioning
- Cable strain relief system
- Bending radius control for cables and fibres
- Patch cable system with only one standard length

Scope of delivery:

- 1 pc. 2LINE MFC 18 with active cooling system
- Door contact switch (optional)
- Double lock systems (optional)
- Interior lighting (optional)
- Power strip (optional)
- Flexible battery trays (optional)
- Vertical or horizontal cable support rails (optional)
- Cooling with heat exchanger, operating voltage 48 VDC (optional)
- Heating (optional)
- Possibility to install passive optical splitters and wavelength multiplexers (up to 64 splitters) (optional)
- Depth-adjustable profile rails for active technology / copper (optional): 19" width 465mm (hole spacing), grid 44.45mm, capacity 21U; ETSI width 515mm (hole spacing), grid 25mm, capacity 37U
- Cable bushings (optional)
- Splice/patch modules (optional)
- Ground socket for MFC 18 with active cooling system (optional)

Dimensions:

- Housing HxWxD[mm]: 1940x2000x500
- Base HxWxD[mm]: 510-660x2000x500

Material:

- Stainless steel, aluminum, powder-coated RAL 7035, plastic

Tests/Standards:

- Environmental protection class IP55
- Resistance class RC2

Features

Type: Socket
Ports: -